



- ▶ **QUENCHED & TEMPERED ALLOY STEEL 130,000 psi MIN. YIELD, 360 - 440 BHN IS USED IN CUTTING EDGE, LOWER SIDECUTTER SECTIONS, WEAR STRIPS & SIDE WEAR PLATES**
- ▶ **UNIQUE WEAR STRIP CONFIGURATION, AFFORDS THE BEST POSSIBLE PROTECTION TO THE BOTTOM OF THE BUCKET**
- ▶ **WHILE OFTEN COPIED BUT NEVER DUPLICATED, THE LEMAC HEAVY TUBE SECTION DESIGN FORMS THE TOP BEAM OF THE BUCKET PROVIDING AN EXTREMELY SOLID BASE FOR THE MOUNTING EARS. CORNER GUSSETS INSURE RIGIDITY IS MAINTAINED FOR LONG BUCKET LIFE**
- ▶ **ALL TRENCHING WIDTH BUCKETS ARE TAPERED TOP TO BOTTOM & FRONT TO BACK**
- ▶ **AGGRESSIVELY SHAPED TO PROMOTE EASY PENETRATION & CLEAN FAST DUMPING**
- ▶ **LOWER SIDECUTTER SECTIONS ARE DRILLED & COUNTERSUNK TO ACCEPT SIDECUTTERS OR OTHER OPTIONS**
- ▶ **OFFERED WITH A WIDE VARIETY OF TOOTH SYSTEMS INCLUDING CAT STYLE, HENSLEY, & ESCO ETC.**
- ▶ **MANUFACTURED IN VIRGINIA, USA & SCOTLAND, UK**

Medium Duty ~ Heavy Duty ~ Severe Duty

▲ LIGHT WEIGHT

▲ UNIVERSAL JOBSITE USE

▲ ROCK HANDLING

▲ MILD WEAR N' TEAR

▲ HARDOX PROTECTION

▲ THICKER WEAR PLATES

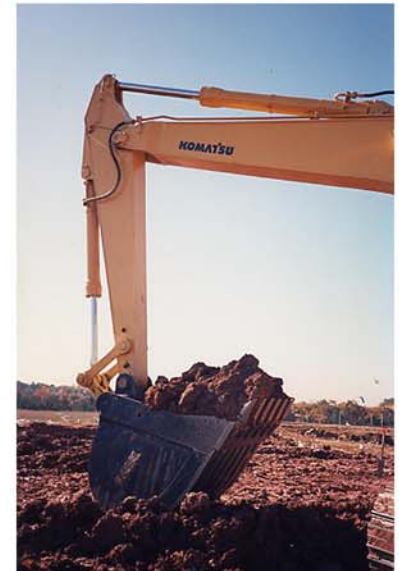
▲ MODERATE WEAR N' TEAR

▲ HARDOX PROTECTION

▲ SEVERE WEAR N' TEAR



MODEL	WIDTH		CAPACITY		MACHINE SIZE	
	INCH	MILLIMETER	YARD 3	METER 3	POUND	KILOGRAM
MD/HD/SD 12	18 = 48	457 = 1,219	0.312 = 1.059	0.285 = 0.968	24,500 = 30,500	11,113 = 13,835
MD/HD/SD 15	18 = 60	457 = 1,524	0.375 = 1.620	0.343 = 1.481	30,500 = 40,000	13,835 = 18,144
MD/HD/SD 18	24 = 48	610 = 1,219	0.584 = 1.372	0.534 = 1.255	??? = ???	??? = ???
MD/HD/SD 21	18 = 72	457 = 1,829	0.467 = 2.538	0.427 = 2.321	40,000 = 50,000	18,144 = 22,680
MD/HD/SD 25	24 = 66	610 = 1,676	0.773 = 2.642	0.707 = 2.416	50,000 = 58,000	22,680 = 26,308
MD/HD/SD 28	24 = 54	610 = 1,372	0.846 = 2.367	0.774 = 2.164	58,000 = 68,000	26,308 = 30,844
MD/HD/SD 29	24 = 72	610 = 1,829	0.836 = 3.217	0.764 = 2.942	??? = ???	??? = ???
MD/HD/SD 30	24 = 72	610 = 1,829	0.885 = 3.523	0.809 = 3.221	68,000 = 85,000	30,844 = 38,555
MD/HD/SD 40	30 = 75	762 = 1,905	1.356 = 4.245	1.240 = 3.882	85,000 = 104,000	38,555 = 47,174
MD/HD/SD 45	42 = 84	1,067 = 2,134	2.305 = 5.728	2.108 = 5.238	??? = ???	??? = ???
MD/HD/SD 50	30 = 78	762 = 1,981	??? = 5.199	??? = 4.754	??? = ???	??? = ???
MD/HD/SD 55	42 = 75	1,067 = 1,905	??? = 4.981	??? = 4.555	??? = ???	??? = ???
MD/HD/SD 60	36 = 66	914 = 1,676	2.424 = 4.974	2.217 = 4.548	??? = ???	??? = ???
MD/HD/SD 65	36 = 84	914 = 2,134	2.446 = 6.613	2.237 = 6.047	??? = ???	??? = ???
MD/HD/SD 70	42 = 78	1,067 = 1,981	2.951 = 6.095	2.698 = 5.573	??? = ???	??? = ???
MD/HD/SD 75	42 = 85	1,067 = 2,159	3.285 = 7.546	3.004 = 6.900	??? = ???	??? = ???
MD/HD/SD 80	42 = 74	1,067 = 1,880	3.623 = 7.105	3.313 = 6.497	??? = ???	??? = ???
MD/HD/SD 110	54 = 96	1,372 = 2,438	5.189 = 10.181	4.745 = 9.310	??? = ???	??? = ???



LEMAC
ENGINEERING

UK / EUROPE

Email: uksales@lemaconline.com

Phone: +44 (0) 1259-751573

LEMAC
CORPORATION

US / CANADA

Email: sales@lemaconline.com

Phone: 1 (804) 862-8481

Website: www.LemaOnline.com

Distributed By:

(Attach Business Card Here)